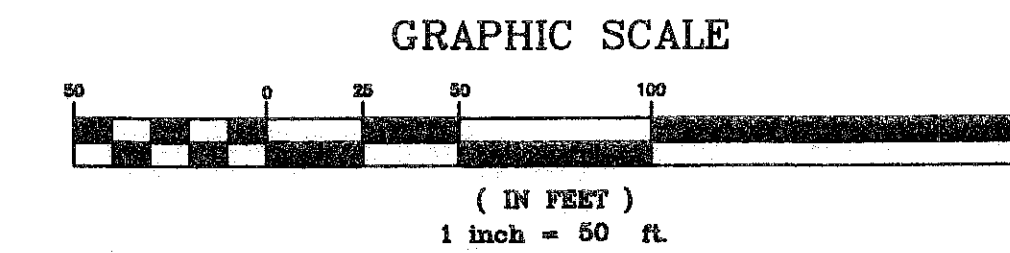
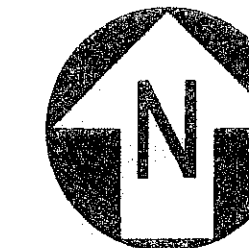
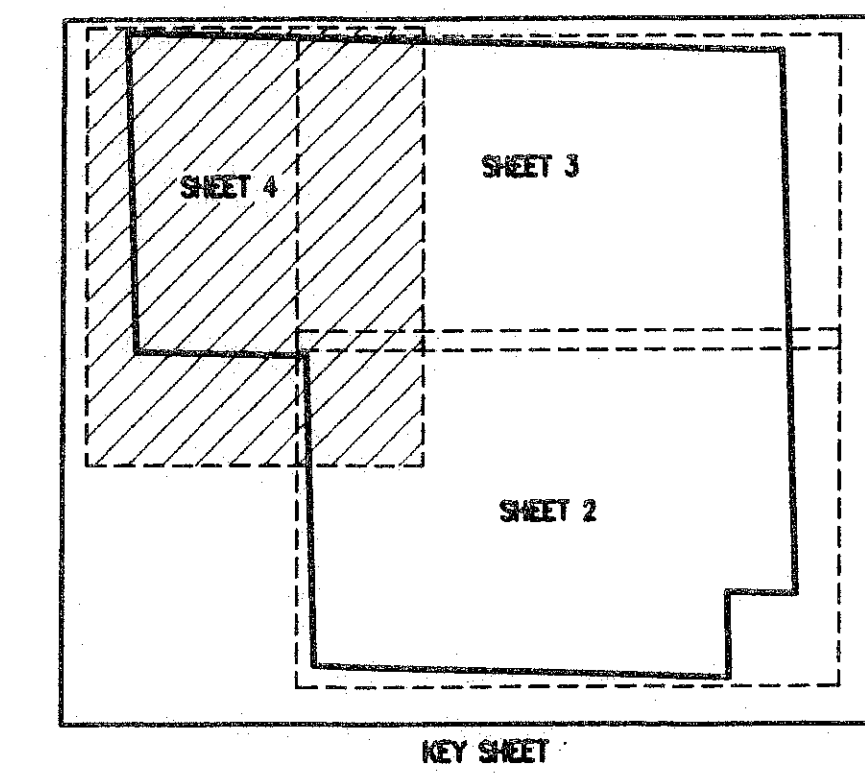
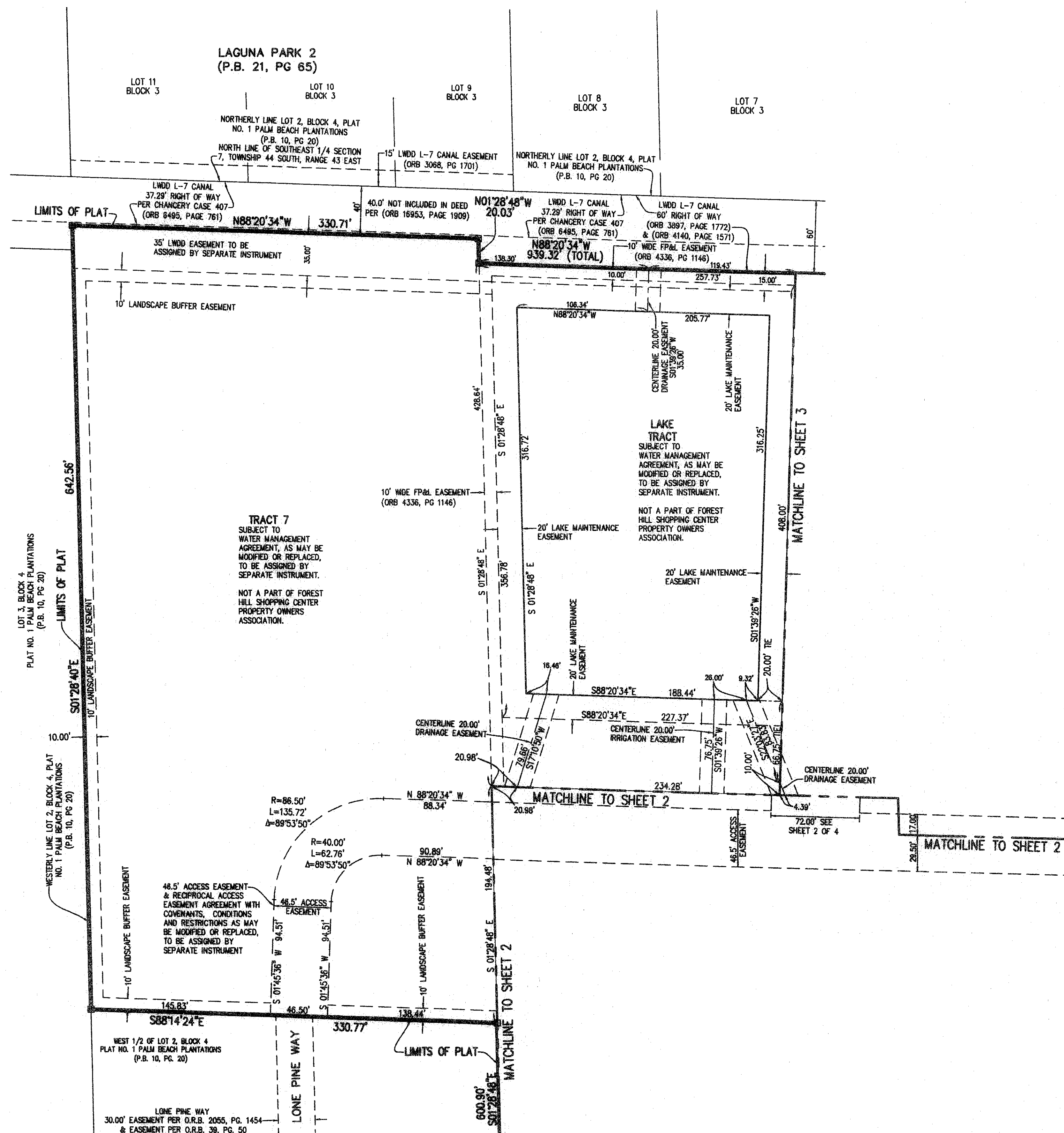


OXYGEN-FOREST HILL CENTER

BEING A REPLAT OF A PORTION OF PALM BEACH PLANTATIONS (MODEL LAND COMPANY) AS RECORDED IN PLAT BOOK 10, PAGE 20, AND LYING IN SECTION 7, TOWNSHIP 44 SOUTH, RANGE 43 EAST, VILLAGE OF PALM SPRINGS, PALM BEACH COUNTY, FLORIDA
SHEET 4 OF 4 MARCH 2009



74



LEGEND

- R RADIUS
- L ARC LENGTH
- Δ DELTA ANGLE
- (M) MEASURED
- O.R.B. OFFICIAL RECORD BOOK
- P.O.B. POINT OF BEGINNING
- P.O.C. POINT OF COMMENCEMENT
- L.A.E. LIMITED ACCESS EASEMENT
- R.O.W. RIGHT-OF-WAY
- C.B. CHORD BEARING
- P.R.C. POINT OF REVERSE CURVATURE
- P.B. PLAT BOOK
- P.G. PAGE
- P.B.C.U.E. PALM BEACH COUNTY UTILITY EASEMENT
- D.E. DRAINAGE EASEMENT
- ☉ CENTER LINE
- ☐ SET PERMANENT REFERENCE MONUMENT LB#2633
- N.R. NON-RADIAL
- FP&L FLORIDA POWER & LIGHT

THIS INSTRUMENT PREPARED BY GARY A. RAGER, P.S.M. LS4828 STATE OF FLORIDA. ENGENUITY GROUP, INC., ENGINEERS SURVEYORS AND GIS MAPPERS 1201 BELVEDERE ROAD, WEST PALM BEACH, FLORIDA 33405. CERTIFICATE OF AUTHORIZATION NO. LB0006603

OXYGEN-FOREST HILL CENTER

A Higher Standard of Excellence

ENGINEERS • SURVEYORS • GIS MAPPERS

1201 BELVEDERE ROAD, WEST PALM BEACH, FLORIDA 33405
 PH (561) 655-1151 • FAX (561) 632-9390
 WWW.ENGENUITYGROUP.COM

DATE	04/01/2008
SCALE	1" = 50'
CAD FILE	7045.01.04
SISK PROJECT	7045
DRAWN	STAFF
CHECKED	G. RAGER

SHEET NO. **4/4**

JOB NO. **7045.01.04**

X:\land Projects\04\7045.01.dwg 7/04/08 11:46:39 AM EDT
 4/08/2009 SUBMITTAL.dwg 4/08/2009 11:46:39 AM EDT